

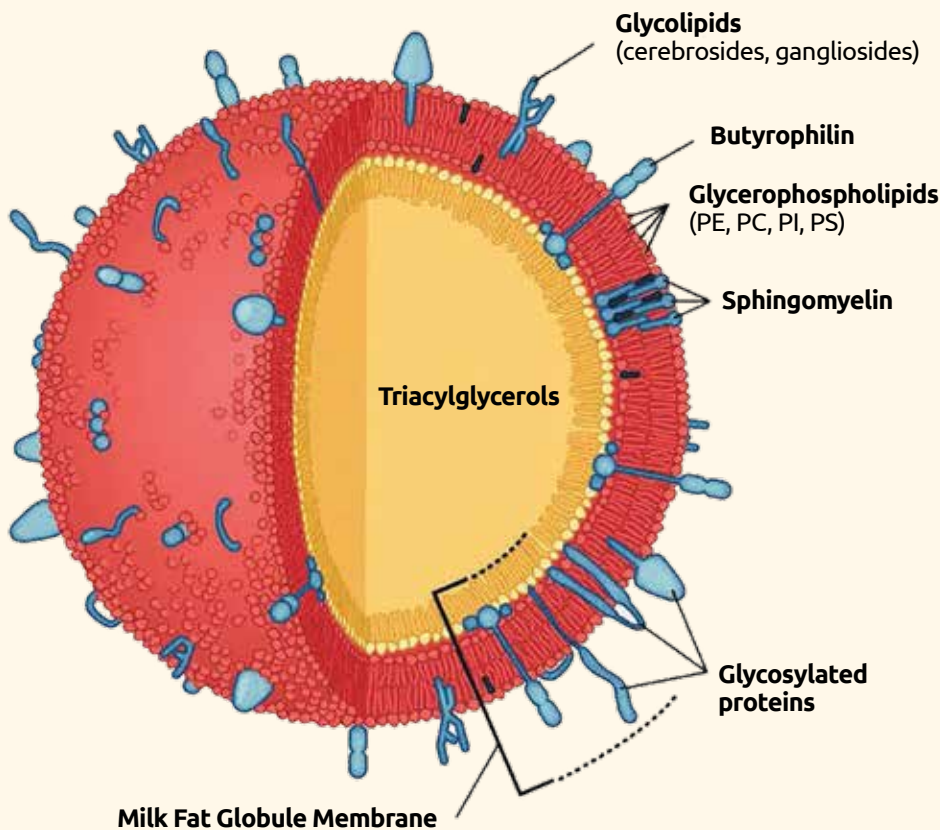


ASEAN NUTRITION DAY

Organised By:



Milk Fat Globule Membrane (MFGM)



Milk Fat Globule Membrane

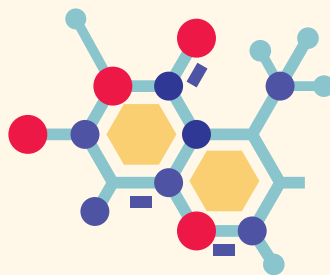


1 | Originates from human breastmilk

- MFGM-enriched ingredient could also provide dietary source of MFGM.



2 | A complex structure made up of bioactive lipids and proteins



- Complex lipids could be sourced from whey MFGM, buttermilk and beta serum during dairy processing
- Before being absorbed by the intestinal epithelium, MFGM components are broken down by digestive enzymes in the GI tract.
- Upon absorption by the intestinal epithelium, the broken-down components are reassembled and enter the circulatory system
- Sphingomyelin is used as a biological marker for MFGM and is used to quantify MFGM in infant formulas.

3 | Demonstrates beneficial effects in the brain, immune system and gut

- Early life in humans is associated with dramatic developmental milestones in the immune system.
- Breastmilk and nutrition are the most tangible and modifiable way of modulating infant development.
- More studies on new indications are needed on necrotising enterocolitis, infantile colic and rotavirus prevention.



Milk Fat Globule Membrane (MFGM)

Scan the QR code to find out more.

*All content has been provided by **Key Opinion Leaders** in the area **Milk Fat Globule Membrane** as a part of Mead Johnson (Asia Pacific) Pte Ltd's medical education initiatives